

Immediate occlusal loading in the edentulous jaw using the Ankylos Implant System

Dr. Joachim Eifert Halle/ Saale Germany

Background: Immediate loading is by definition the attachment of prosthesis in direct conjunction with the surgical procedure on the same day. Occlusal loading means the crown/bridge is in contact with the opposing dentition in centric occlusion (International Consensus Meeting, Barcelona 2002). Immediate occlusal loading is established by either provisional or definite prosthesis.

Methods: Between 2004 and 2007, 20 cases of immediate occlusal loading in the edentulous jaws were treated (total: 116 implants).

Treatment protocol:

Implant insertion with primary stability (35 Ncm)
in the upper jaw: minimum of 6 implants
in the lower jaw: 4 to 6 implants

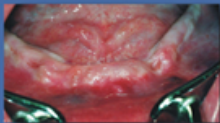
Torque for abutment fixation 25 Ncm

Torque for provisional prosthesis fixation 10 Ncm

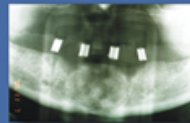
First removal of provisional prosthesis after 6 weeks

Final restoration: 2 to 4 months after implant insertion

Case Presentation: 52 year old female with edentulous lower jaw



Original clinical status



preoperative Panoramic radiograph



Implant insertion



Abutment insertion



Fitting of the titanium caps



Preparation of the prosthesis



Fixed titanium caps



Finish of the provisional prosthesis in the laboratory



Prosthesis in situ



Prosthesis in situ



postoperative Panoramic radiograph



Status after 6 weeks

Results: Implant survival rate according to this protocol after 4 years 97,2 %

Conclusion: After careful indication, this method is a superb and safe procedure for the dentist. The fixed provisional prosthesis is very comfortable for the patient.